



Department of
Education

Shaping the future

Standalone bushfire plan 2023-2024

Denmark Primary School

Purpose

The *Standalone Bushfire Plan* document is a detailed plan of how our school has prepared and will respond to a catastrophic fire danger rating alert or to a bushfire event.

Contents

| | | |
|----------|---|-----------|
| 1 | School details | 3 |
| 2 | Emergency response contact list | 4 |
| | 2.1 Important bushfire emergency contact sources | 6 |
| 3 | School Response Team | 7 |
| 4 | Bushfire response telephone tree | 8 |
| 5 | Emergency equipment | 9 |
| 6 | Bushfire preparation checklist..... | 10 |
| 7 | Bushfire action plan maps..... | 12 |
| | 7.1 Onsite 'safer building location(s)' | 12 |
| | 7.2 Offsite evacuation locations | 13 |
| | Appendix A - Bushfire warning stages | 14 |
| | Appendix B - Procedures in the event of a sudden bushfire | 16 |
| | Relocate to onsite 'safer building location' | 16 |
| | Offsite evacuation procedures | 18 |
| | Appendix C - Pre-emptive (planned) closure procedures..... | 20 |
| | Flow chart – Principal's response to Fire Behaviour Index of 75 (Extreme Fire Danger Rating) or greater | 21 |
| | Appendix D – After-hours or school holiday procedures | 22 |

1 School details

To complete this plan, on the front cover of the document:

- insert your school name
- add the year for the new bushfire season
- add the date in the footer to show when the plan became active.

Enter information into the **grey** sections of this document, following the prompts in the square brackets where featured. You can add extra rows to tables where necessary.

When your plan is complete, follow the steps on Ikon to [lodge, update or access your standalone bushfire plan online](#).

| | |
|---|---|
| School name (include name of co-located school or facilities if applicable) | Denmark Primary School |
| School address | 21 Mitchell Street, DENMARK, WA, 6333 |
| Education Region | Southwest Education Region |
| Number of students | 453 |
| Number of students requiring extra support if evacuating | 3 |
| Number of staff | 46 |
| Number of school sides bordered by bush | 2 |
| Names of major roads bordering school | Mitchell Street, Offer Street, Brazier Street and Thornton Street |
| School's site-specific alert, for example: <ul style="list-style-type: none"> • siren/pause x 3 • continuous handbell • continuous siren or short whistle blasts | Continuous siren indicates evacuation 3 Blasts indicate Lock Down (Protect in Place) |

| | |
|--|-----------------------------------|
| Plan prepared by (principal's name) | Damian Luscombe and Helen Spencer |
| Date prepared or reviewed | 28 August 2023 |

2 Emergency response contact list

Enter the contact details into the following table:

| Organisation | Details | Phone number / website |
|--|--|---|
| Local police (for example, name of nearest police station) | Denmark Police Station Mitchell Street, Denmark, WA 6333 | 9848 0500 |
| Local hospital (name of nearest hospital or medical emergency facility) | Denmark Hospital, Scotsdale Road, Denmark WA 6333 | 9848 0600 |
| Department of Fire and Emergency Services regional contact | Regional Duty Coordinator | 1800 314 644 https://www.dfes.wa.gov.au |
| Local fire brigade (for example, name of nearest fire station) | Denmark Fire and Rescue (Town Site) Darin Hockley FCO Grant Wilson | 9848 3228 Private number removed for public view Private number removed for public view www.denmark.wa.gov.au/residents/bushfire-and-emergency-management/bushfire-brigades |
| Local bushfire brigade (for example name of nearest station) | Ocean Beach Bush Fire Brigade Graham Dixon – FCO | Private number removed for public view |
| Bus contractors (ready for pre-emptive closure or offsite evacuation) | Scotsdale Driver: John Ford Contractor: Brett & Debbie Edwards Southern Bus Charters Denmark North East/Youngs A Driver: Justin Contractor: Swan Transit Denmark South East/Youngs B Driver: Wayne Landsell Contractor: Susan McCabe Busy Blue Bus Denbarker Driver: Kevin Gibbs Contractor: Chris Turner Next Gen Bus Lines | Private number removed for public view Private number removed for public view Private number removed for public view Private number removed for public view |

| | | |
|--|---|---|
| | Denmark Hazelvale/Walpole Driver: Malcolm Smeathers Gary Hunter (Thurs & Fri) Contractor: Janine & Malcom Smeathers | Private number removed for public view |
| | Denmark Carmarthen/Shadforth Driver: Justin Contractor: Swan Transit | Private number removed for public view |
| | Ocean Beach 1 Driver: Jeff Collens Contractor: Dea and Jeff Collens | Private number removed for public view |
| | Ocean Beach 2 Driver: Mark Lissiman Contractor: Next Gen Bus Lines | Private number removed for public view |
| | Denmark William Bay/Stiener & Spirit of Play Driver: Rick Aama Contractor: Susan McCabe | Private number removed for public view |
| | Kent River Driver Daniel Leake Contractor: Daniel and Linda Leake | Private number removed for public view |
| | Tindale Driver: Lee Kurmunski | Private number removed for public view |
| | Busy Blue Bus Zimmerman/OB Road Driver: Dave Mounster Coordinator: Helen Archer | Private number removed for public view |
| Electricity provider - in the case of a power outage (for example, Horizon Power, Western Power) | Western Power (Emergencies and Outages) | 13 13 51 |
| State emergency service (if known) | SES – Zimmerman Street Denmark | 9848 1899 Duty phone is 0429 926 715 |
| Poisons information (where relevant) | WA Poisons Information Centre | 131 126 |
| Director of Education name | Sue Cuneo | Private number removed for public view |

2.1 Important bushfire emergency contact sources

DIAL 000 in an emergency

- **Emergency WA**
 - Website: <https://www.emergency.wa.gov.au/>
- **Department of Fire and Emergency Services**
 - Information line: 13 33 37
 - Website: <https://www.dfes.wa.gov.au/>
 - Facebook: <https://www.facebook.com/dfeswa>
 - Twitter: https://twitter.com/dfes_wa
- **ABC Emergency**
 - Website: <https://www.abc.net.au/emergency>
- **Local radio**
 - ABC local radio: Find your local radio station at <https://www.abc.net.au/local>
 - 6PR: Listen online at <https://www.6pr.com.au/listen-live/> or tune into AM 882 and Digital Radio

3 School Response Team

Enter the names and mobile numbers of the staff responsible for carrying out emergency procedures during a bushfire event. The principal coordinates the incident response to onsite or offsite locations (refer to Appendix B & C procedures).

Examples of suggested duties include:

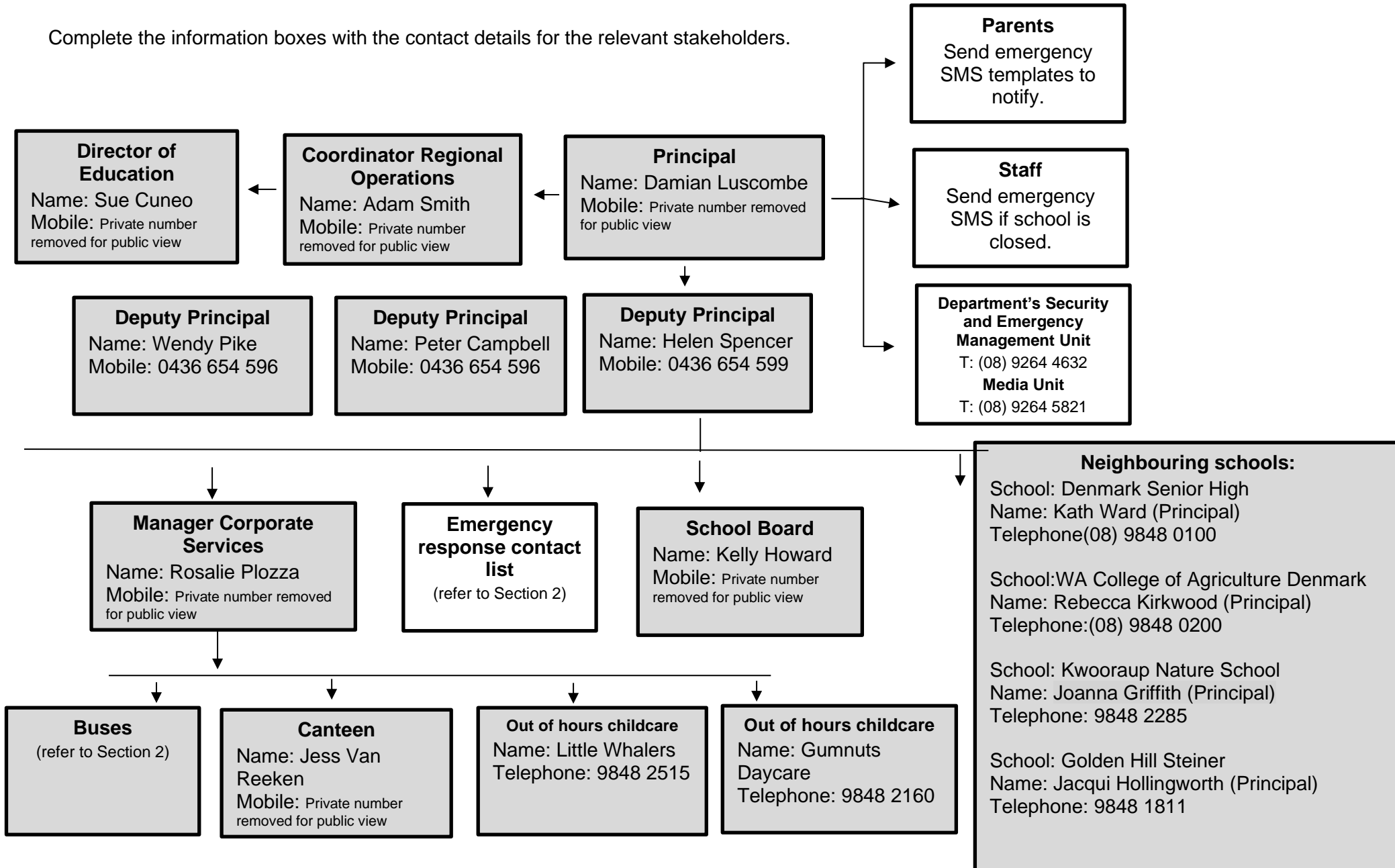
- fire warden duties
- checking all rooms
- keeping a copy of school registers for roll call
- monitoring the bushfires warnings stages (as per Appendix A)
- send out text alerts to parents
- liaising with emergency services, community members, parents and carers.

Consider making cards that outline the duties of the school response team. This can be useful to hand out at the start of the incident.

| Position | Staff name | Duties | Mobile number |
|-------------------------------|----------------------|--|--|
| Principal | Damian Luscombe | Site Manager | Private number removed for public view |
| Deputy Principal | Helen Spencer | Monitor Bushfire Warning Stages | 0436 654 599 |
| | Wendy Pike | Monitor Bushfire Warning Stages | 0436 654 596 |
| | Peter Campbell | Monitor Bushfire Warning Stages | 0436 654 596 |
| Manager Corporate Services | Rosalie Plozza | Site manager To contact visitors using Passtab on her phone | Private number removed for public view |
| Teachers | All Teachers on site | Check all classrooms Turn off air conditioners Close doors and windows Close roof vents if applicable | Switchboard exts 9848 4700 |
| Accredited first aid officers | Peter Campbell | Apply first aid | 0436 654 596 |
| | Robyn McMeiken | | Private number removed for public view |
| | Caromy Macdougall | | Private number removed for public view |
| Other (if applicable) | Melissa Williams | Keep a copy of school register for roll call send 'alert' texts to parents. | Private number removed for public view |
| | Jody Bushell | Close staff room roof vent | Private number removed for public view |
| | Sandra Anderson | | Private number removed for public view |
| | Maz Hearn | | Private number removed for public view |

4 Bushfire response telephone tree

Complete the information boxes with the contact details for the relevant stakeholders.



5 Emergency equipment

Identify the location and the type of emergency equipment at your site.

| Equipment | Details (include location/s, date checked and any other comments) |
|---|---|
| Evacuation kit (section 7 of the school Incident Management Plan). | Located in Admin office, evacuation kit updated Feb 2023 |
| First aid kit(s) - include masks in case some students are susceptible to smoke. | <p>First aid kits locations</p> <p>Adminstration office</p> <ul style="list-style-type: none"> • 1 x Whole School first aid kit • 3 x Phase Group first aid kits • 1 x first aid unit, fixed to wall (1st medical sick bay) • 1 x Trauma Kit • Icepacks – staffroom <p>Early Childhood Area</p> <ul style="list-style-type: none"> • 1 x first aid unit fixed to wall (Unit 4) • 5 x individual class first aid kits <p>Across the school</p> <ul style="list-style-type: none"> • all classrooms in junior and senior areas • all staff duty folders – bandaids and gloves |
| <p>Emergency alert system and communication equipment, for example:</p> <ul style="list-style-type: none"> • mobile telephones (charged) • hand-operated fire alarm (portable siren) • megaphone/loud hailer • portable CB radios • spare batteries. | <ul style="list-style-type: none"> • mobile telephones (charged) • hand-operated fire alarm (portable siren) located with evacuation kit in reprographic room • spare batteries located in MCS office • megaphone/loud hailer |
| <p>Registers for:</p> <ul style="list-style-type: none"> • students • staff • visitors. | <p>Front Office/Admin</p> <p>Evacuation Box in printing room</p> <p>Passtab on MCS and School Officer Phones</p> |
| <p>Standalone bushfire plan:</p> <ul style="list-style-type: none"> • hard copy in the evacuation kit • copy saved to an online platform for access offsite. | <p>Located in Admin office, evacuation kit updated 29/8/23</p> <p>Copy of student and staff information saved online 29/8/23</p> |





6 Bushfire preparation checklist

Principals must:

- complete this bushfire preparation checklist annually
- inform all staff members of their responsibilities.

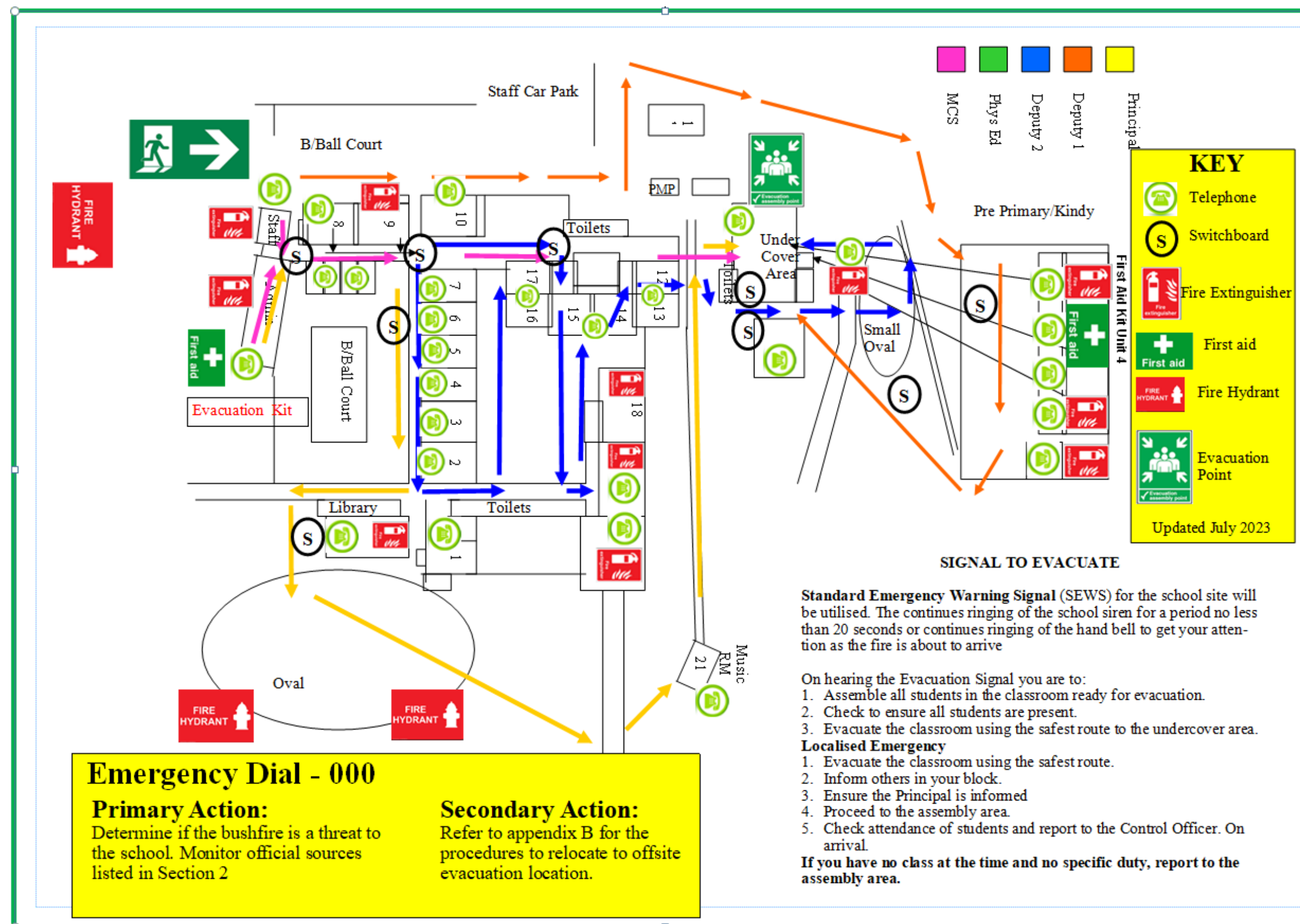
You can provide details of your preparation activities in the comments.

| Management activities | <input checked="" type="checkbox"/> or N/A | Comments |
|--|--|--|
| The annual review of the Standalone bushfire plan has been completed before the start of bushfire season. | <input checked="" type="checkbox"/> | 28/07/2023 |
| Consulted and received advice in preparing your Standalone bushfire plan from any of the following(as relevant): <ul style="list-style-type: none"> • local Emergency Services • Department of Fire and Emergency Services • Department of Biodiversity, Conservation and Attractions – Parks and Wildlife Service • local volunteer fire brigade • WA Police Force • local emergency management committee (LEMC) or local government representative • community emergency services manager, if there is one for the area. | <input checked="" type="checkbox"/> | Requested feedback from Community Emergency Services Manager at the Denmark Shire |
| Staff have been made aware of the Standalone bushfire plan through: <ul style="list-style-type: none"> • staff meetings • staff bushfire induction session that includes: <ul style="list-style-type: none"> – an overview of the Standalone bushfire plan – how to turn off evaporative air conditioner units, the location of switches – how to close roof vents – the types of bushfire warnings issued by the Department of Fire and Emergency Services and the Emergency Alert telephone warning system – to direct bushfire media enquiries to the Department's media unit (08) 9264 5821. | <input checked="" type="checkbox"/> | Communicated in Weekly Staff Bulletins Term 3 2023 |
| Students and parents or carers have been made aware of the Standalone bushfire plan through: <ul style="list-style-type: none"> • key bushfire safety messages incorporated into the curriculum • newsletters • school information booklet (include actions and procedures) • school website. | <input checked="" type="checkbox"/> | Key Bushfire safety messages are communicated through the Denmark Primary School Newsletter, Dojo and the 2023 K-6 Curriculum. |

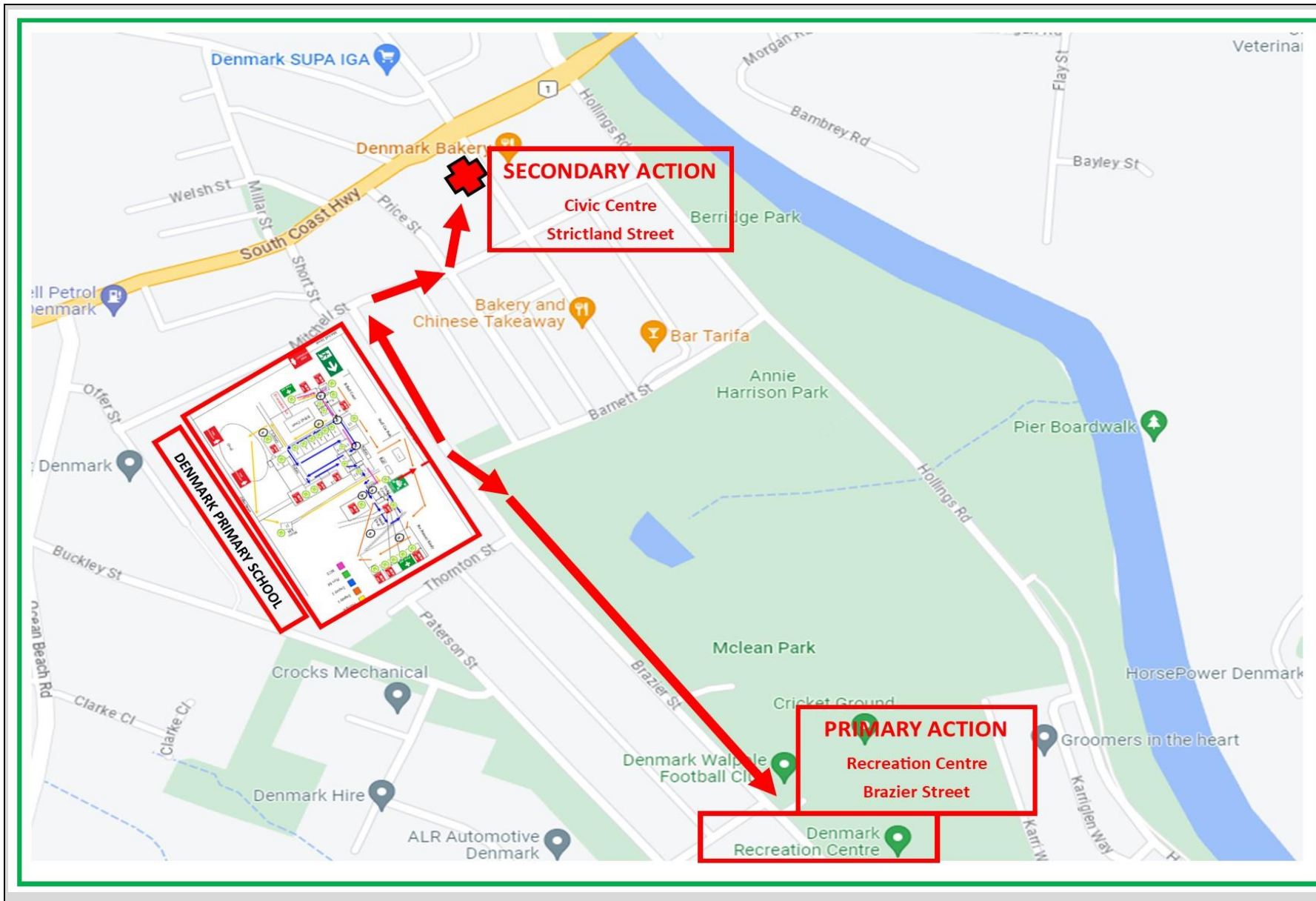
| | | |
|--|---|--|
| <p>Communication plans are in place:</p> <ul style="list-style-type: none"> • Emergency response contact list completed (section 2). • Bushfire response telephone tree completed (section 4). • communication templates for sample emergency text message, newsletter content and school notice text are complete (refer to Appendix D). <p>Contact lists for staff and parents must be current.</p> |  | <p>Completed Term 3 2023</p> <p>Communication maintained through Message You website to Staff, Students and Guardians</p> |
| <p>Emergency equipment available and checked (section 5):</p> <ul style="list-style-type: none"> • evacuation kit checked at least once per term • emergency warning or alert system works • emergency communications equipment available • first aid kit(s) available • registers for students, staff and visitors readily accessible for roll call. |  | <p>Updated and completed</p> <p>Ongoing updates and checks</p> |
| <p>Practise drills moving to your onsite 'safer building location(s)':</p> <ul style="list-style-type: none"> • before the start of the bushfire season • at least once per term during the bushfire season. <p>You must do at least 2 drills per year.</p> |  | <p>Evacuation Term 1, 3 and 4 2023 Lock Down Term 2 2023</p> <p>Pam Wells Assembly Hall – Evacuation point 1.</p> <p>Bushfire Action Map</p> <p>1. Denmark Recreation Centre Phone: (08) 9848 0344 Karis Asplin</p> <p>2. Denmark Civic Centre Phone: (08) 9848 0300 Renee Wiggins / Charmaine Shelley - Request Key</p> |
| <p>The asset protection zone, which is a minimum distance of 20 metres surrounding the main school buildings, is checked and is:</p> <ul style="list-style-type: none"> • clear of all rubbish, long dry grass, bark, flammable and combustible materials, including leaf litter and unused piles of mulch • maintained routinely throughout the year. <p>For information on the asset protection zone, refer to Prepare for bushfire season at your school on Ikon.</p> |  | <p>Asset Protection Zone actioned in 2019 and currently ongoing in 2023/24</p> <p>Fuel Management Load cleared Jan 2023</p> |

7 Bushfire action plan maps

7.1 Onsite 'safer building location(s)'



7.2 Offsite evacuation locations



Emergency, dial 000

Primary action:
Determine if the bushfire is a threat to the school. Monitor official sources listed in section 2.

Secondary action:
Refer to Appendix B for the procedures to Relocate to an offsite evacuation location




PRIMARY ACTION
Denmark Recreation Centre
Brazier Street
DENMARK WA

SECONDARY ACTION
Civic Centre
Strictland Street
DENMARK WA

Updated – July 2023

Appendix A - Bushfire warning stages

Emergency services communicate information in a number of ways during a bushfire event. Use these warnings to understand when your need to activate your bushfire procedures (refer to Appendix B).

| Bushfire warning stages | |
|---|--|
| <p>ADVICE</p>  | <p>A fire has started, be aware and keep up to date.</p> <p>This is general information to keep principals informed and up to date with developments.</p> <p>Principals must:</p> <ul style="list-style-type: none"> • turn off evaporative air conditioners and ensure roof vents are closed. • check and patrol the school regularly for bushfire activity, paying particular attention to the evaporative air conditioners. |
| <p>WATCH AND ACT</p>  | <p>There is a possible threat to lives and property. Conditions are changing.</p> <p>Principals must prepare to:</p> <ul style="list-style-type: none"> • evacuate; or • move students, staff and visitors to their pre-determined onsite 'safer building location'. They must not be moved to an open area. <p>Evacuation orders are:</p> <ul style="list-style-type: none"> • issued by the Incident Controller or Emergency Services if required. • relayed via official sources such as Emergency WA. <p>It is vital that the principal:</p> <ul style="list-style-type: none"> • accesses bushfire information from official sources • makes an informed decision to stay onsite or evacuate offsite based on advice from the Incident Controller or Emergency Services. |
| <p>EMERGENCY</p>  | <p>A school is in danger as its area will be impacted by fire. Take immediate action to survive.</p> <p>The principal will be advised whether staff, students and visitors can leave the area or if they must shelter where they are as the fire burns through the area.</p> <p>A siren, called the State Emergency Warning Signal (SEWS), may accompany an emergency warning.</p> <p>Evacuation orders are:</p> <ul style="list-style-type: none"> • directed by the Incident Controller or Emergency Services. • relayed via official sources, such as Emergency WA. <p>It is vital that the principal:</p> <ul style="list-style-type: none"> • accesses bushfire information from official sources |

| | |
|------------------|--|
| | <ul style="list-style-type: none"> • makes an informed decision to stay onsite or evacuate offsite based on the advice. |
| AII CLEAR | <p>The danger has passed, and the fire is under control, but stay alert in case the situation changes.</p> <p>It may not be safe to return to school yet.</p> |

Appendix B - Procedures in the event of a sudden bushfire

Relocate to onsite 'safer building location'

You may be instructed to relocate to your onsite 'safer building location(s)'. Do not use an open area such as a school oval or non-enclosed building.

Initiate this procedure if either of the following occurs:

- a 'Watch and Act' or 'Emergency Warning' alert is issued on the [Emergency WA](#) website (refer to Appendix A for details about the alerts)
- instruction from the Department of Fire and Emergency Services, Emergency Services or your Director of Education.

Follow these procedures to relocate to the onsite safer building location(s).

| Action | Notes (if required) |
|---|---------------------|
| <p>Dial 000 for emergency services and request fire brigade.</p> <p>When connected to Department of Fire and Emergency Services, advise:</p> <ul style="list-style-type: none"> • your school name and address • the fire situation • how many students and staff are being impacted • if moving to a 'safer building location' and where it is located • if anyone requires medical attention • CB radio channel, if being used. <p>Remain in contact with the Department of Fire and Emergency Services.</p> <p>Monitor official bushfire emergency information contact sources in section 2.1.</p> | |
| Activate your school response team to carry out their responsibilities (section 3). | |
| Use your emergency response contact list to contact stakeholders (section 2). | |
| <p>Follow your bushfire response telephone call tree (section 4) to communicate with the school community.</p> <p>Ensure parents receive emergency text message alerts to:</p> <ul style="list-style-type: none"> • inform them of relocation • keep them updated (use the emergency text message alert templates, refer to Manage bushfire incident communications on Ikon). <p>Parents must not collect students until instructed.</p> | |
| <p>Confirm:</p> <ul style="list-style-type: none"> • evaporative air conditioners are turned off | |

| | |
|--|--|
| <ul style="list-style-type: none"> • all building roof vents, windows and doors are closed before anyone enters the onsite safer building location(s). • where possible and safe to do so, relocate vehicles or other combustible items (school bags, rubbish bins etc) at least 20 metres from safer building locations. • monitor embers for possible ignition. | |
| <p>Take emergency equipment (section 5):</p> <ul style="list-style-type: none"> • registers for students, staff and visitors • evacuation kit • water • mobile phones (charged) • student medication | |
| <p>Sound the school emergency warning or alert system.</p> | |
| <p>Follow advice from the incident controller, emergency services, the Manager Security and Emergency Management or the director of education to move to the onsite safer building location(s) (section 7.1)</p> <p>Students and staff must remain in classrooms unless they are directed to move to an onsite safer building location.</p> | |
| <p>Check student, staff and visitor registers after moving to an onsite safer building location (roll call). Advise the police if anyone is missing.</p> <p>You must give special consideration to students with known respiratory conditions.</p> | |
| <p>Wait for emergency services to arrive or the incident controller to provide you with information.</p> <p>Ongoing advice will also be provided by the Manager, Security and Emergency Management or the director of education.</p> <p>Continue to monitor official bushfire information sources listed in section 2.1.</p> | |
| <p>The Department will consult the incident controller or emergency services and notify you when it is safe to return to classrooms or for students to be collected by parents. You will receive advice from the director of education.</p> | |

Offsite evacuation procedures

You may be instructed to relocate to your offsite evacuation location.

Initiate your offsite evacuation procedure if a 'watch and act' or 'emergency warning' bushfire warning alert on the [Emergency WA](#) website is invoked (refer to the bushfire warnings listed in Appendix A) and you receive direction from either:

- Department of Fire and Emergency Services, incident controller or emergency services or
- the director of education.

Follow these procedures if you need to evacuate to an offsite evacuation location during a bushfire event.

| Action | Notes (if required) |
|---|---------------------|
| <p>Dial 000 for emergency services and request fire brigade.</p> <p>When connected to Department of Fire and Emergency Services, advise:</p> <ul style="list-style-type: none"> • your school name and address • the fire situation • how many students and staff are being impacted • if moving to a 'safer building location' and where it is located • if anyone requires medical attention • CB radio channel, if being used. <p>Remain in contact with Department of Fire and Emergency Services and your director of education.</p> <p>Monitor official bushfire emergency information contact sources listed in section 2.1.</p> | |
| Activate your School response team to carry out their responsibilities (section 3). | |
| Refer to the Emergency response contact list to contact stakeholders (section 2). | |
| Follow advice from the emergency services or the Manager, Security and Emergency Management or the director of education to decide which of the school's offsite evacuation location(s) is the safest to use (section 7.2). | |
| <p>If safe to do so, muster at the identified assembly area where staff, students and visitors can gather to prepare for offsite evacuation.</p> <p>Use an alternative assembly area if your first identified assembly area is unsafe.</p> <p>Note: Students and staff must remain in classrooms unless they are directed to move to an onsite safer building location and/or onsite assembly area.</p> | |

| | |
|---|--|
| <p>Follow the Bushfire response telephone call tree to communicate with the school community (section 4).</p> <p>Ensure parents and carers receive emergency SMS alerts to:</p> <ul style="list-style-type: none"> • inform them of relocation • keep them updated (use the emergency text message alert templates, refer to Manage bushfire incident communications on Ikon). <p>Note: Parents must not collect students until instructed.</p> | |
| <p>Confirm:</p> <ul style="list-style-type: none"> • evaporative air conditioners are turned off • building roof vents and doors are closed. | |
| <p>Take emergency equipment (section 5):</p> <ul style="list-style-type: none"> • registers for students, staff and visitors • evacuation kit • mobile phones (charged). • student medication. <p>Sound the school emergency warning or alert system.</p> | |
| <ul style="list-style-type: none"> • Notify bus operators • Notify other contractors scheduled to visit the site • Move all students, staff and visitors from the assembly area to the offsite evacuation location. | |
| <p>Check registers after evacuating staff, students and visitors (roll call). Advise the police if anyone is missing.</p> | |
| <p>The Manager, Security and Emergency Management or the director of education will provide ongoing advice. Continue to monitor official bushfire information sources listed in section 2.1.</p> | |
| <p>The Department will consult the incident controller or emergency services and notify you when it is safe to return to classrooms or for students to be collected by parents. You will receive advice from the director of education.</p> | |

Appendix C - Pre-emptive (planned) closure procedures

You may be instructed to pre-emptively close your school due to a fire behaviour index of 75 (extreme fire danger) or greater being forecast.

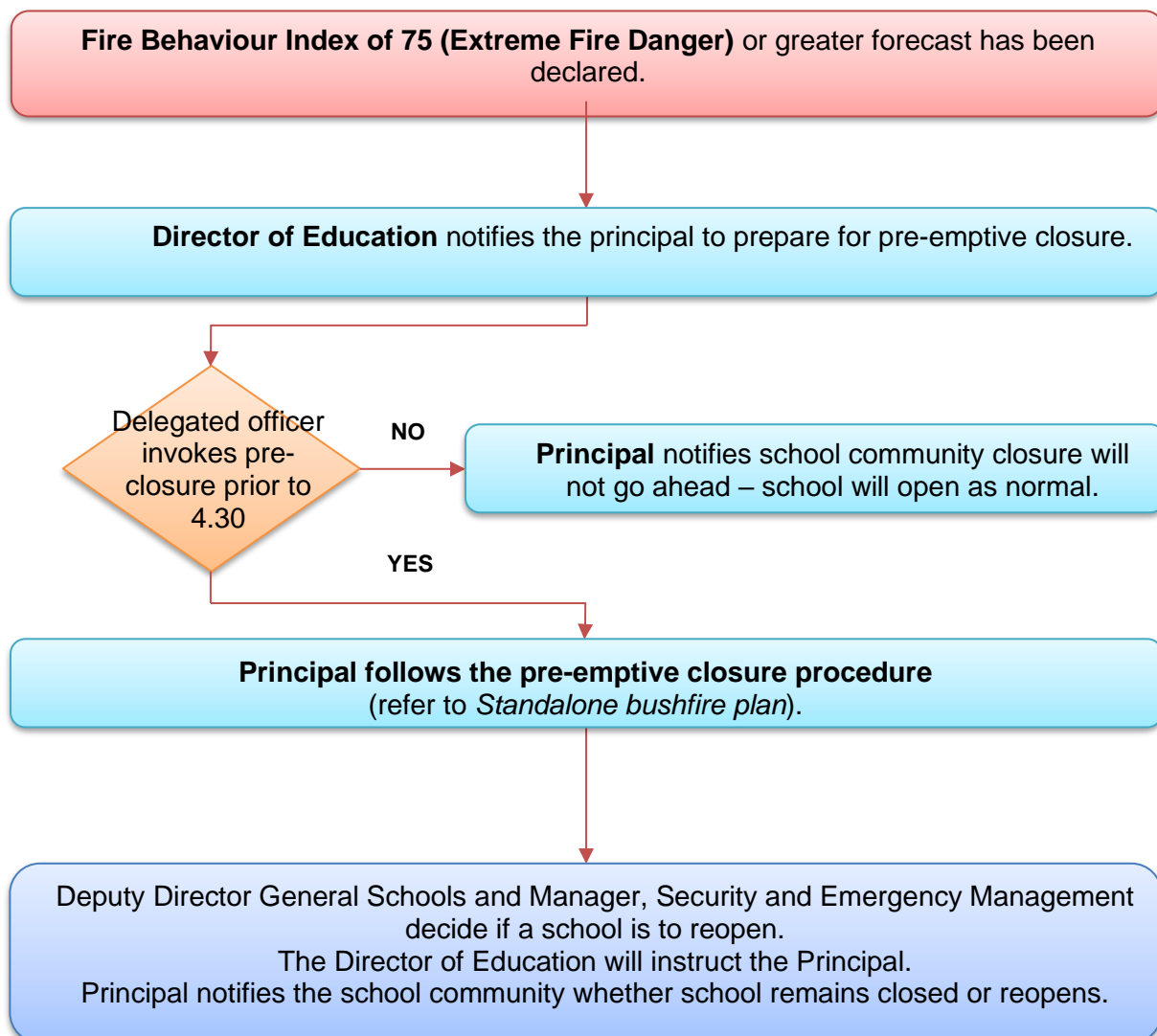
Initiate the closure procedure if you receive advice from the director of education or the Security and Emergency Management unit.

Follow these procedures for a planned school closure.

| Action | Notes (if required) |
|---|---------------------|
| Monitor official bushfire emergency information contact sources listed in section 2.1. | |
| Activate your School response team to carry out their responsibilities (section 3). | |
| Communicate the pre-emptive closure, continued closure or school reopening: <ul style="list-style-type: none"> • use your Emergency response contact list to contact stakeholders (section 2) • use your Bushfire response telephone tree (section 4) • use communication templates in Manage bushfire incident communications for SMS, social media posts and Connect notices to keep the school community informed • place the notice of temporary closure on external school access points and on the school website. Note: Contact lists for staff, parents and carers must be current. | |
| Confirm: <ul style="list-style-type: none"> • windows and doors are closed • evaporative air conditioners are turned off • roof vents closed • money is removed from the school premises • expensive items of equipment secured. | |
| Secure school premises and activate security system. Before departing, email AssetPlanningServices.SecurityEM@education.wa.edu.au or call 9264 4632 to confirm: <ul style="list-style-type: none"> • all security systems armed • site is secure. | |
| When the pre-emptive closure is cancelled, remove the notice of temporary closure from external school access points. | |

Refer to the following Flow chart – Principal's response to fire behaviour index of 75 (extreme fire danger) or greater forecast.

Flow chart – Principal's response to Fire Behaviour Index of 75 (Extreme Fire Danger Rating) or greater



Appendix D – After-hours or school holiday procedures

You may be instructed to keep your school closed during the school holidays or after hours during a bushfire event.

Initiate the below procedure if both of the following occur:

- A 'Watch and act' or 'Emergency warning' bushfire warning alert on the [Emergency WA](#) website is invoked (refer to the bushfire warnings listed in Appendix A)
- AND
- Direction received from the Deputy Director General, Schools or the Manager, Security and Emergency Management. The director of education will relay the decision to you.

Follow these procedures if a bushfire starts during the school holidays or after hours.

| Action | Notes (if required) |
|---|---------------------|
| Remain in contact with your director of education and monitor official bushfire emergency information contact sources listed in section 2.1. | |
| Use your emergency response contact list to contact stakeholders (refer to section 2). | |
| Follow the bushfire response telephone call tree to communicate with the school community. Send parents and carers and staff emergency text message alerts to inform them of the school closure. To access sample SMS text, refer to Manage bushfire incident communications . | |
| Work with the director of education to seek alternative school and transport arrangements (if required). | |
| The Department's Media Unit and Incident Support Unit uses media outlets and Emergency WA to make public announcements of: <ul style="list-style-type: none"> • the school closure • temporary alternative accommodation. | |
| The Department will consult the incident controller or emergency services and notify you when it is safe for the school to reopen. You will receive advice from the director of education or the Manager, Security and Emergency Management. | |
| Send parents, carers and staff emergency text message alerts to inform them when school can reopen. | |